

PORTTEL

LOGISTIC TECHNOLOGIES



Salidas 15:09 22°

| Hora de salida | Compañía | Barco | Estatus |
|----------------|----------|----------------------|-----------|
| 15:30 | | Millenium Dos | Atrasado |
| 16:00 | | HSC Ceuta Jet | Atrasado |
| 17:30 | | Avemar dos | A tiempo |
| 18:00 | | HSC Algeciras Jet | Cancelado |
| 19:15 | | Millenium dos | A tiempo |
| 20:00 | | Pasjo per Formentera | Cancelado |
| 21:00 | | HSC Algeciras Jet | A tiempo |

| | | | |
|------|-----|---------|----------|
| 2106 | D01 | 11:05am | On Time |
| 0547 | B12 | 1:30pm | Boarding |
| 780 | C03 | 11:05am | Boarding |
| 4649 | E83 | 3:00pm | On Time |
| 5296 | E83 | 2:00pm | On Time |
| 6729 | D09 | 11:00am | Boarding |
| 7383 | E70 | 11:10am | On Time |
| 7466 | B7 | 11:09am | Boarding |

| Numero | WSP | CF | WSP | Autobus | WSP | Fecha | Argumentos | Fecha | WSP | Estado |
|--------|-------|-------|-------|----------------------------|-------|-------|------------|-------|-------|--------|
| 10001 | 10001 | 10001 | 10001 | Autobus Formentor de Ceuta | 10001 | 10001 | | 10001 | 10001 | 10001 |
| 10002 | 10002 | 10002 | 10002 | Autobus Formentor de Ceuta | 10002 | 10002 | | 10002 | 10002 | 10002 |
| 10003 | 10003 | 10003 | 10003 | Autobus Formentor de Ceuta | 10003 | 10003 | | 10003 | 10003 | 10003 |
| 10004 | 10004 | 10004 | 10004 | Autobus Formentor de Ceuta | 10004 | 10004 | | 10004 | 10004 | 10004 |
| 10005 | 10005 | 10005 | 10005 | Autobus Formentor de Ceuta | 10005 | 10005 | | 10005 | 10005 | 10005 |

GENERAL PRESENTATION 2024





WHO ARE WE?

| | |
|-----------------------------------|---|
| PORTEL's history & timeline | 3 |
| Quality standards..... | 4 |
| PORTEL's organisation..... | 5 |
| PORTEL's internal structure..... | 6 |



WHAT DO WE OFFER?

| | |
|---|----|
| Our capacities..... | 7 |
| Lines of business..... | 8 |
| Services // | |
| eServices - CPD | 9 |
| Consultancy..... | 11 |
| Products // | |
| PCS - Port Community System..... | 12 |
| LSP - Paperless System Merchandise Release..... | 13 |
| PMS - Port Management System..... | 14 |
| PSI -Integrated Supervision Platforms | 15 |
| AFS - Air Freight Solution..... | 16 |
| Specialised products..... | 17 |
| Projects// | |
| Some executed projects | 18 |



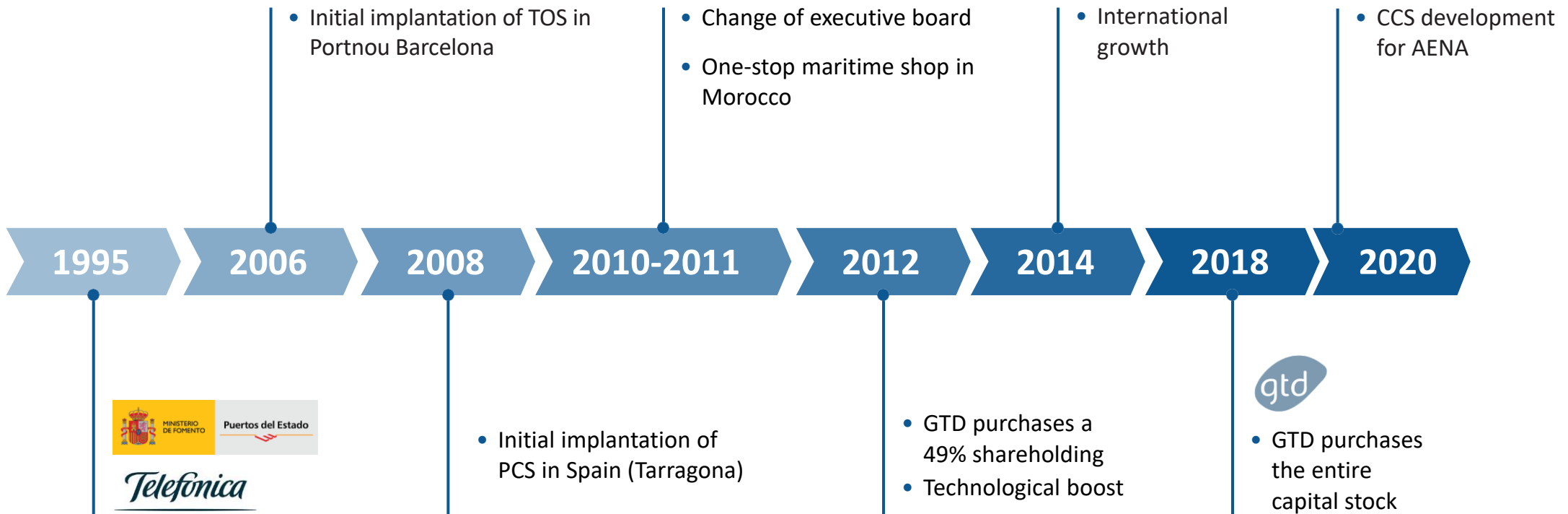
FUTURE LINES

| | |
|-----------------------------------|----|
| Lines of research..... | 19 |
| RDI Plan..... | 19 |
| Evolution/new products..... | 20 |
| PCS Technological evolution | 20 |
| PAIS | 20 |

PORTEL's history & timeline

PORTEL is an IT company that develops, implements and maintains a broad range of solutions for the port and airport logistics sector. Our projects and products are currently in use by logistics operators, ports and airports, both in Spain and abroad.

Our objective is to promote technology in the transportation sector



Quality standards

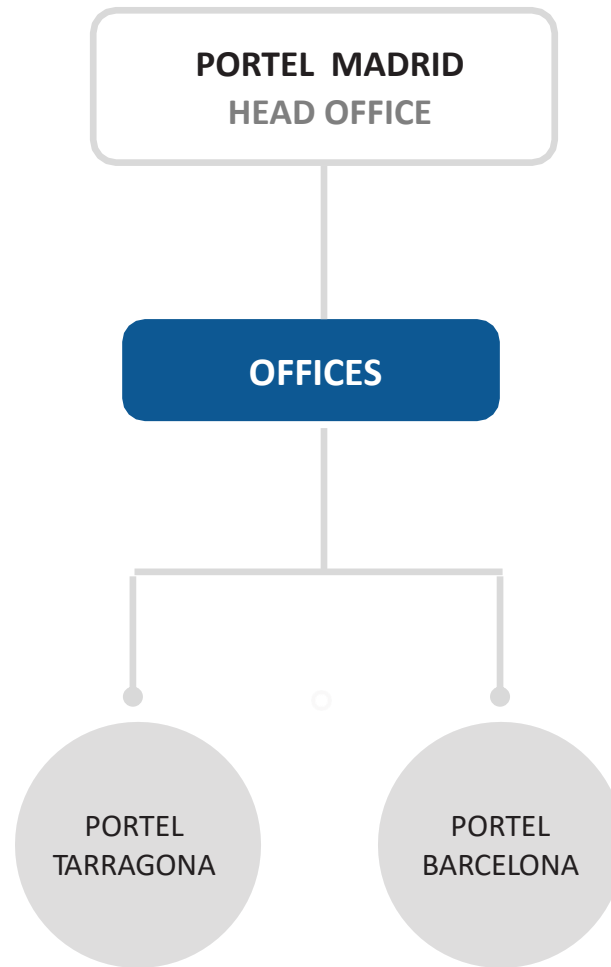
PORTEL is part of the **International Port Community Systems Association**, which seeks to influence public policy within the European Union and its Member States in order to ensure e-logistics in all European ports, as a key component of the maritime, shipping and logistics industry in the EU.



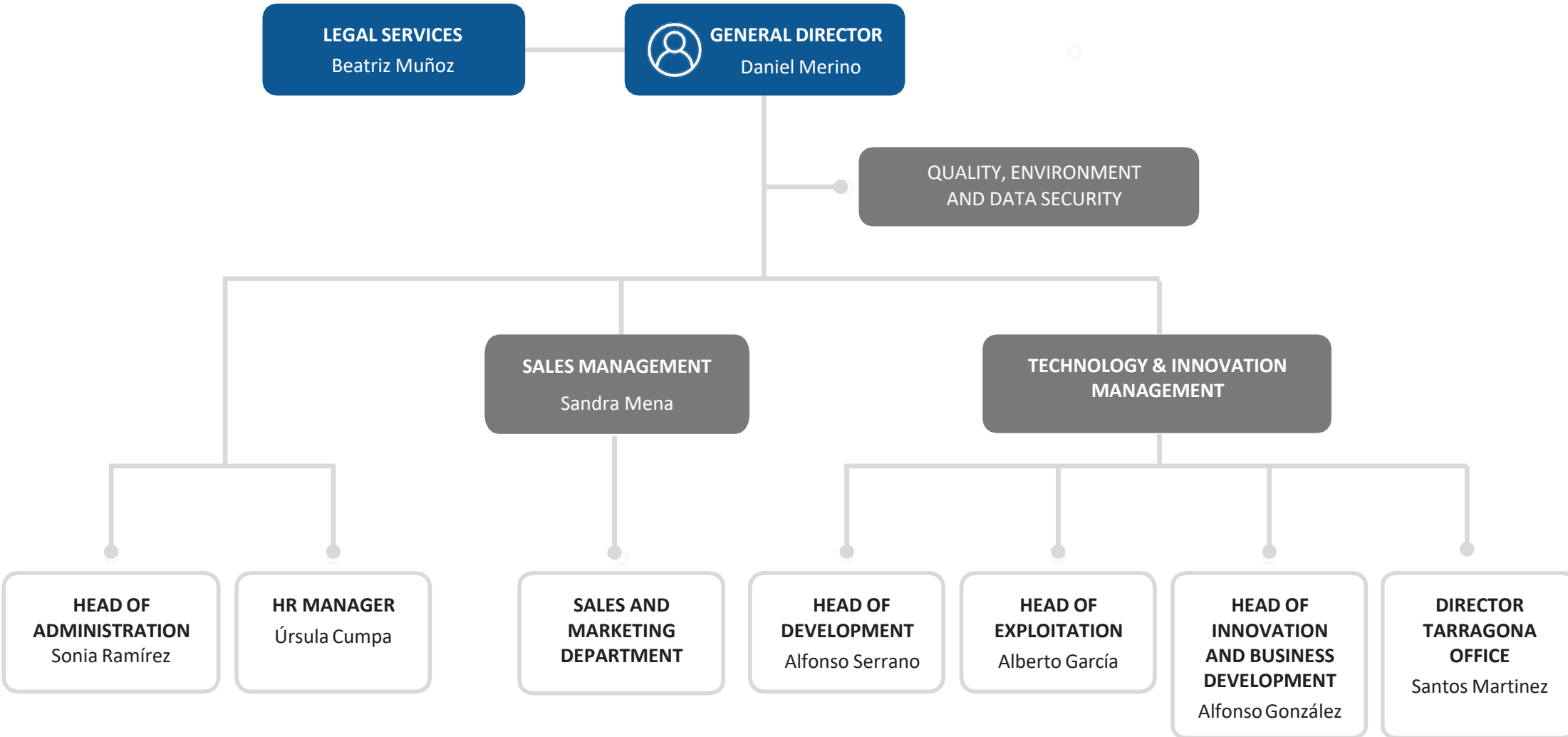
PORTEL's priority is to secure the quality of its service and products based on recognised standards to which it is certified:



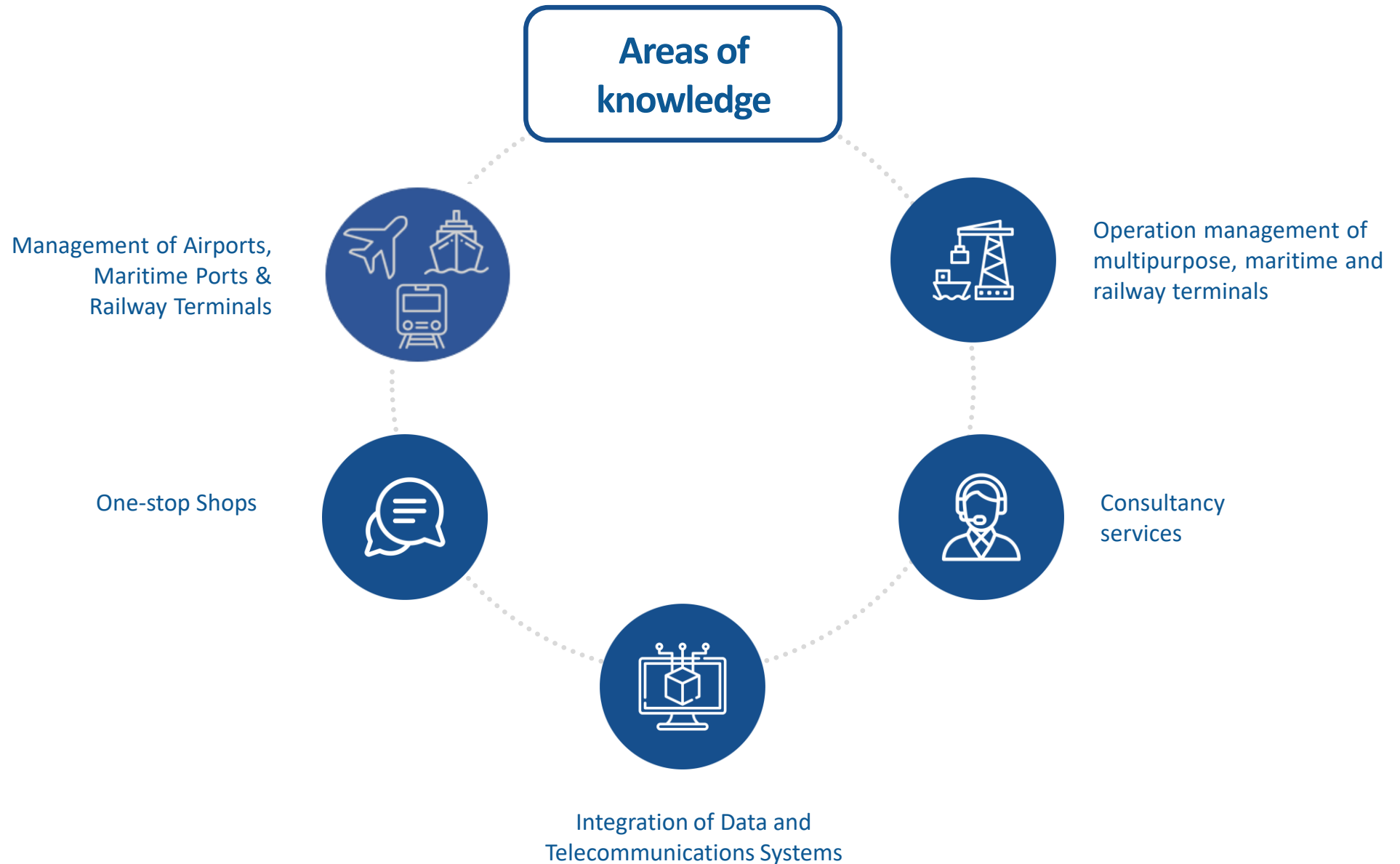
PORTEL's organisation



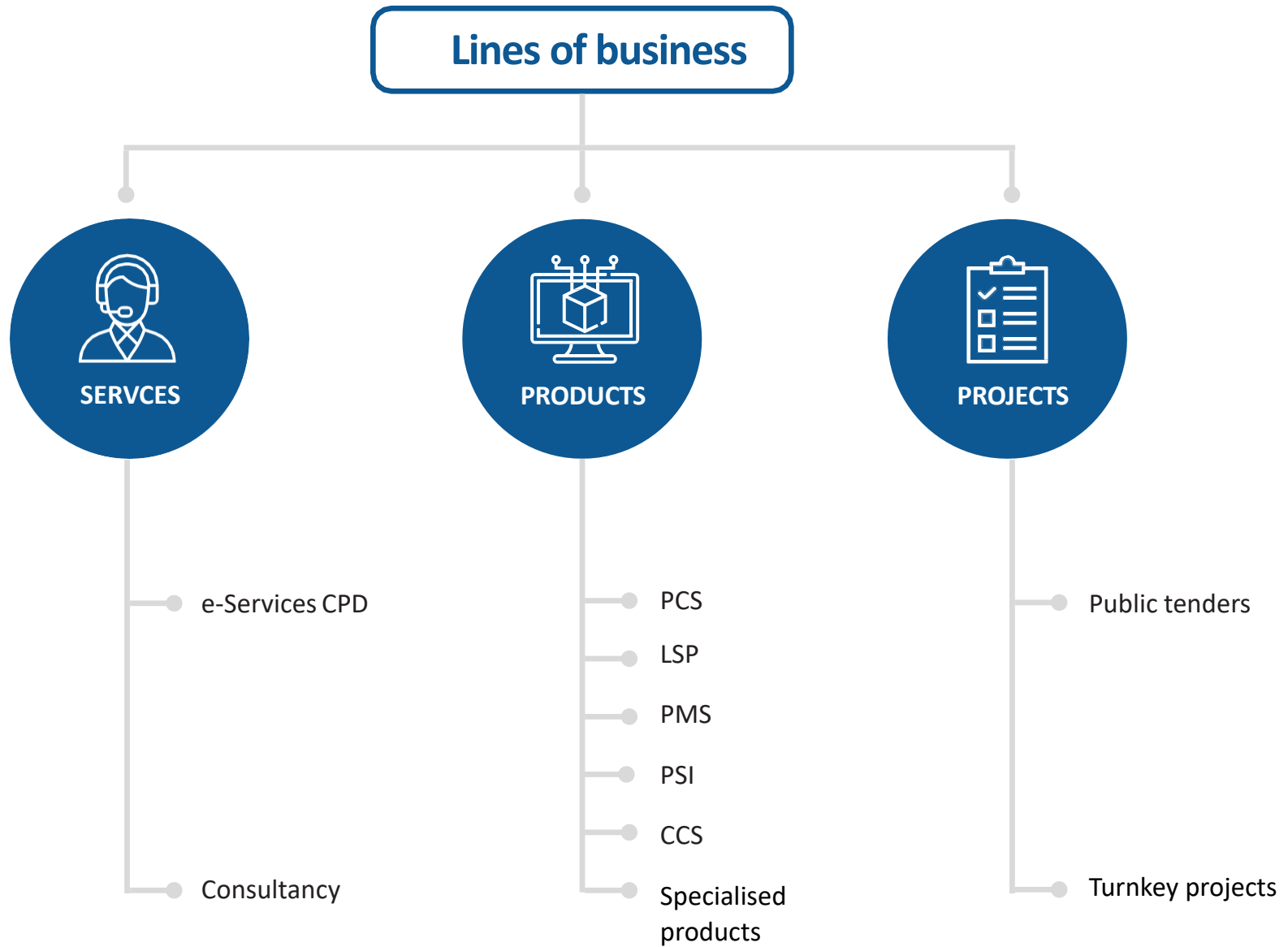
PORTEL's internal structure



Our capacities



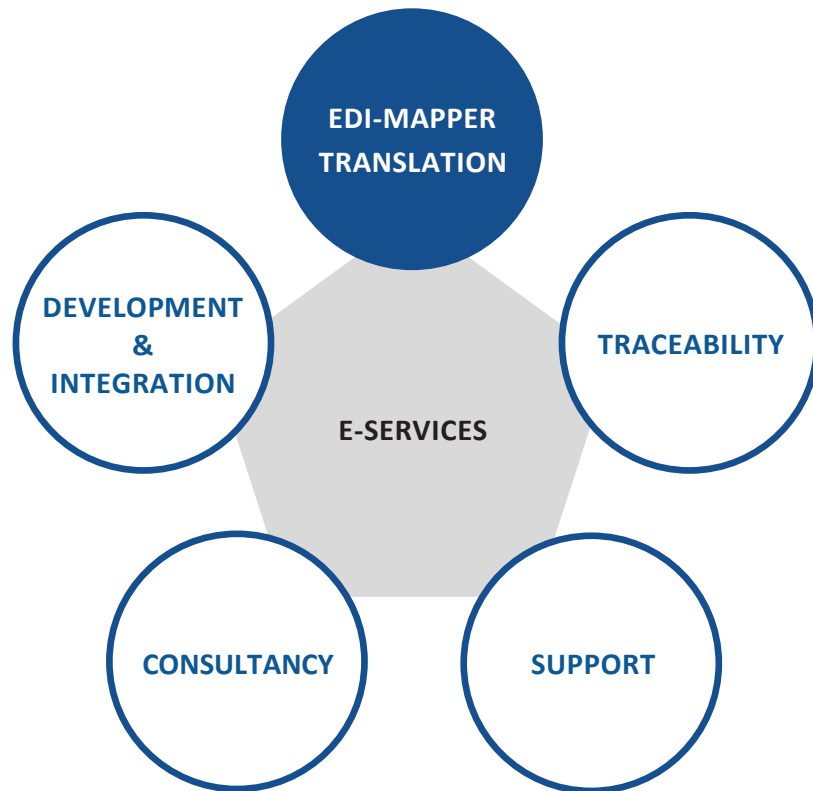
Lines of business



Lines of business / Services // e-Services - CPD (1/2)



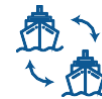
e-Services are essential to speed up and harmonise administrative procedures and steps, benefiting the logistics chain.



The following transactional services are offered as **e-Services**:



Ship or airplane manifests, for loading and downloading



Request for layovers and berthing



Notice of hazardous cargo



Receipt of cargo in transit and change of location (ENS, EXS and ECS)



Shipping instructions



Acceptance/delivery and transportation orders



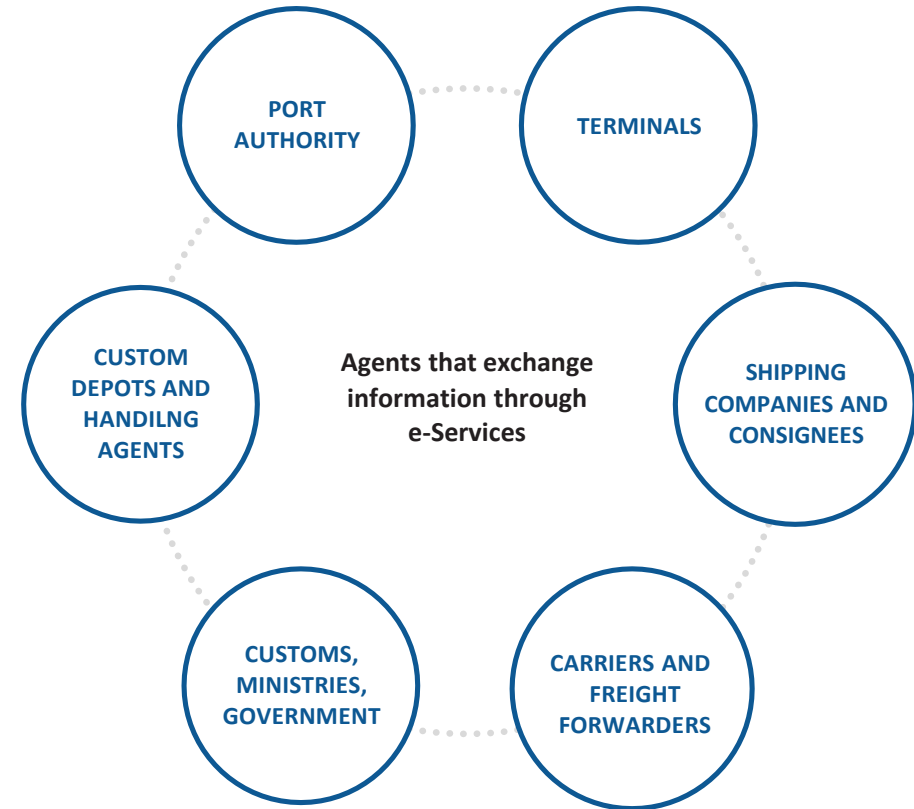
The system is connected to the **National One-Stop Shop** (Dueport) and other National and Local One-Stop Shops.

Lines of Business / Services // e-Services - CPD (2/2)



One-Stop Shop

- **One-Stop Shops** to speed up administrative procedures and steps, benefiting the logistics chain.
- **Exchange of Electronic Information** (in various formats – G2G, B2B and B2G), **traceability and Data Harmonization**.
- **Creating a solid base** through a legal and regulatory framework to facilitate the implementation of this type of solution.
- **Support in the decision-making process** (in investment, legislative and business matters, etc.)



MAIN CLIENTS



Lines of Business / Services // Consultancy



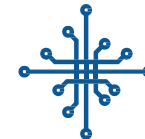
Portel is one of the most experienced companies in Information Technology integration in the maritime-port sector. **It seeks to help its clients successfully undertake complex change, ranging from the strategy's design to its implementation.**

Its proposals **totally adapt to the client's needs**, necessities and requirements, designing and implementing specific solutions for each one.



BUSINESS DEVELOPMENT CONSULTANCY

Model comparison: Comparative evaluation, Management models, analysis and optimization of resources.



TECHNOLOGICAL CONSULTANCY

Infrastructure Plan, IT System Plan, Application Analysis, System Engineering, Process Analysis.



SECURITY CONSULTANCY

PPP, PEI, Procedures, Simulation, Facility Design, Access Control Design, Quality and Environmental Procedures.

MAIN CLIENTS



PERÚ

Autoridad Portuaria Nacional



Lines of Business / Products // PCS



PCS – Port Community System

- **Web platform**, allowing entities that interact with the port to exchange information and carry out their trade transactions in a unified, safe and structured manner.
- **Optimized operations** thanks to the standardization of procedures used by all members of the port community.
- **Integration of services** managed by the Port Authority through a one-shop stop.

MAIN CLIENTS



COMPANY

Passenger and cargo services

Vessel services

PRIVATE AGENTS

- Maritime Terminals
- Freight forwarders and customs agents
- Importers and exporters
- Carriers (trucks, railway)
- Logistic operators
- Providers of port services
- Dry ports
- Banks, insurers, etc.

GOVERNMENT

OFFICIAL AUTHORITIES

- Maritime Authority
- One-shop customs stop
- Other authorities of interest
- Spanish Tax/Customs Authorities

Lines of Business / Products // LSP



LSP - Paperless System Merchandise Release

The **Paperless System Merchandise Release** allows speedier cargo entries and exits from the port precinct, in a flexible, effective and safe manner.

CHARACTERISTICS

- Connected to the Spanish Tax Authorities to obtain authentic customs dispatches.
- Able to be used for both cargo exports and imports.
- Valid for all types of merchandise, containers, bulk, vehicles, general cargo...
- Connected to the Port's Access control and weighing systems.
- Data recorded in RFID cards, Bar codes or QRs.

ADVANTAGES

- Allows information to be exchanged between vessel consignees, loaders, terminals, verifications with customs and port authorities.
- Automatic issue of Cargo Manifests.
- Total removal of hard-copy lists.
- PCS-integrated

EXPORT CLIENTS



IMPORT CLIENTS



Lines of Business / Products // PMS



PMS – Port Management System

- Maritime One Stop Shop.
- Request for services to the ship.
- Cargo and passenger management.
- Port and terminal facilities management.
- Management.
- Connection and integration with customs, merchant navy, other port systems and the rest of the port community.

REGULAR PROJECTS



PMS – Port Management System

PCS / CCS / POS...



Port security

Maritime and Inland



WEB site and WEB services

Connection with users and other systems.



Payment gateway

Lines of Business / Products // PSI



PSI – Integrated Supervision Platforms

Integration of monitoring systems and platforms

- Integration of various technological subsystems into a single platform.
- Centralised management and shared information.
- Mobilization of resources and technical/technological infrastructure.
- Supervision and control of operations, resources and cargo.
- Subsystems for Port Security and Protection; Environmental Management; Railway Control; Access Control and Credentials; Maritime Pollution; Cargo Tracking.

MAIN CLIENTS



REGULAR PROJECTS



PSI – Integrated Supervision Platforms
PIS (Port Integrated Supervision)



Management of ocean-meteorological risks



Port security
Sea and land



Tools to facilitate e-commerce

Lines of Business / Products // CCS



CCS - The best option to optimize air freight processes

- **CCS** (a highly competitive Community Freight System) with an **integrated solution** servicing the entire air logistics community.
- **Optimization of processes** related to freight transport by air, **facilitating a digital information exchange**.

MAIN CLIENTS



SCOPE OF ACTIVITY – CCS in the logistics chain



Lines of Business / Products // Specialised products



Specialised products

- **eFactura:** System to deliver, notify and receive e-invoices.
- **Cardes:** Management system for cargo manifests and summary statements for provisional deposits of consignees before Customs and Port Authorities.
- **Nauta:** Used to track deliveries, to issue freight lists and files for shipping companies.
- **Infopax:** A smart system providing maritime stations with information in real time on daily routes.
- **Handling:** To cover all messages demanded from the Customs Authorities for handling and customs deposit companies.

MAIN CLIENTS



Handling close-up

| Hora de salida | Compañía | Barco | Estado |
|----------------|----------|----------------------|-----------|
| 15:30 | acciona | Millenium Dos | Atrasado |
| 16:00 | acciona | HSC Ceuta Jet | Atrasado |
| 17:30 | BALEARIA | Avenmar dos | A tiempo |
| 18:00 | acciona | HSC Algeciras Jet | Cancelado |
| 19:15 | acciona | Millenium dos | A tiempo |
| 20:00 | BALEARIA | Pasio per Formentera | Cancelado |
| 21:00 | acciona | HSC Algeciras Jet | A tiempo |

Infopax close-up

eFactura close-up



Cardes close-up

Lines of Business / Projects



Projects

This refers to all Portel activities where product adaptations are developed and delivered, to cover our clients' specific needs.

Portel has a team of professionals, consultants, engineers, technicians and sales representatives with extensive professional experience, to cover both client needs by designing, developing and implementing “**turnkey**” projects, and to participate in public tenders related to the transportation logistics chain.

Our scope of action is both nationwide and international, assisting large private logistic operators and Public Administrations, related to international transportation and commerce, Port Authorities, Ministries of Transportation and Governments.

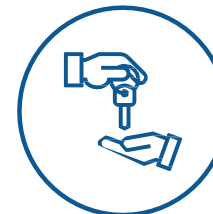
SOME EXECUTED PROJECTS

- **Single-Stop Shop** for Foreign Trade in Morocco (PORTNET).
- **Passenger Terminal Management System** at the Port of Tanger-Ville (Morocco).
- **Access control** and **Credentials Centre**, Port of Tarragona.
- **ATON Project** for navigation aid (Puertos del Estado).
- **AIRIS Project** for navigability aid, Guadalquivir River (Seville Port Authority).
- **Secure Project** for port security and protection measures, Bahía de Cádiz Port Authority.
- **Safe and Green Port Platform Project** for safety, protection and environmental management, Port of Huelva



Public tenders

arranged by port authorities and Governments



Turnkey projects

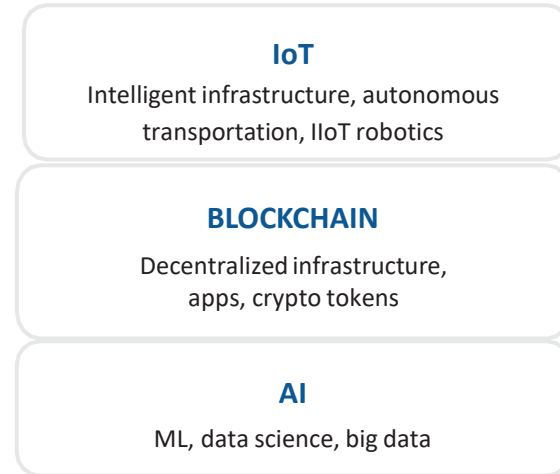
for logistic operators

Lines of research / RDI Plan

RDI Plan in Portel (2019-2022)

PORTEL has focused on developing **new products and services** that respond to the current and future needs of the Port and Airport Logistics Sector. To do this, it has incorporated three new technologies:

- **IoT**: to obtain data in real time.
- **BC**: for agent interoperability.
- **AI**: to improve efficiency.

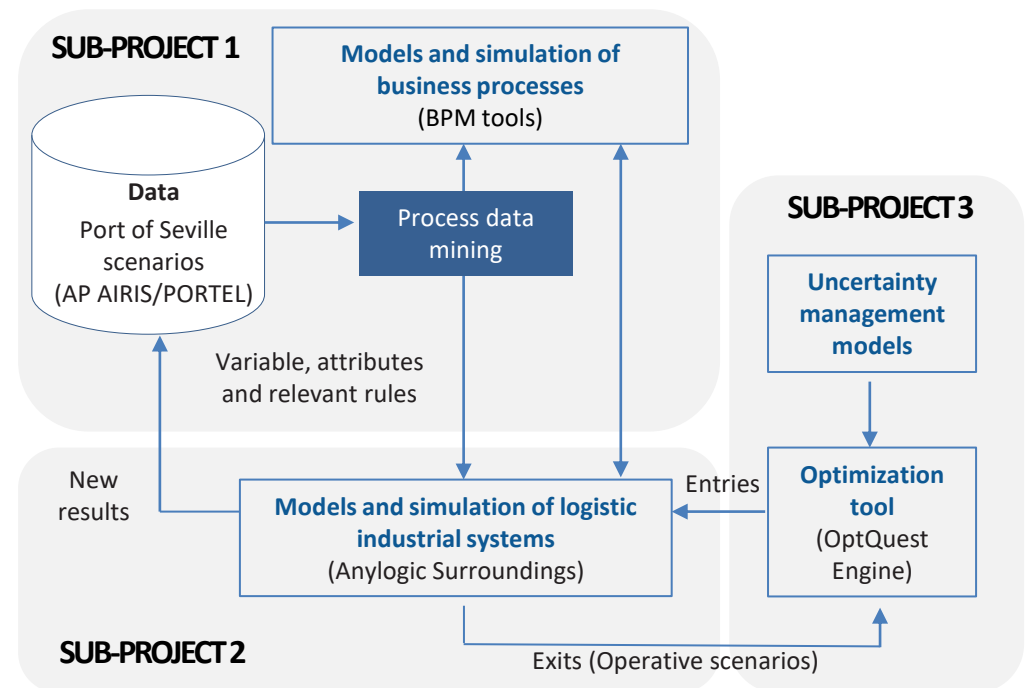


Project CIUS3A (in collaboration with the University of Seville)

SUB-PROJECT 1: Port Business Process Modelling and mining for improvements and automation.

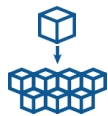
SUB-PROJECT 2: Operational Process Modelling and Optimization in Port Digital Twins

SUB-PROJECT 3: Meta-heuristic optimization and uncertainty management in simulators of digital twins of complex infrastructures such as ports and terminals.



Evolution / new products

PCS Technological evolution – Currently in process



Microservices Architecture (MSA): small services that are separately managed, though intercommunicated.



User Experience Interfaces (UX): User interfaces allowing users to adequately interact with devices and electronic solutions.



Application mobility: Mobile applications (APPS) and responsive design.

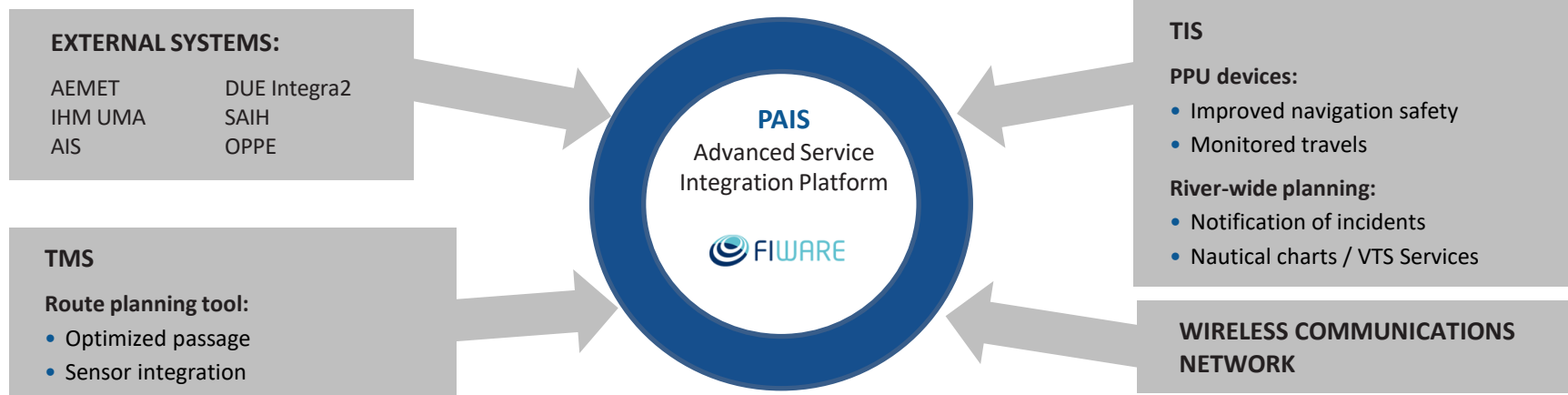


Analytics: data exchange through Open Data solutions, exploiting them for Big Data tools.



Internet of Things (IoT): for automation and real-time information using physical devices.

PAIS – Advanced Service Integration Platform



PLATFORMS



Portal-AtoN



PORTEL

LOGISTIC TECHNOLOGIES

www.portel.es

MADRID HEAD OFFICE

Avenida de Leonardo Da Vinci, 2-A. 28906 Getafe.
Madrid

+34 91 721 45 00
+34 91 329 02 88

comercial@portel.es

TARRAGONA OFFICE

Paseo Gremi de Marejans,
nº 1, 43004 Tarragona

+34 977 238 742

smartinez@portel.es

BARCELONA OFFICE

Passeig de García Fària,
nº 17 , 08005 Barcelona

34 934 939 300

comercial@portel.es